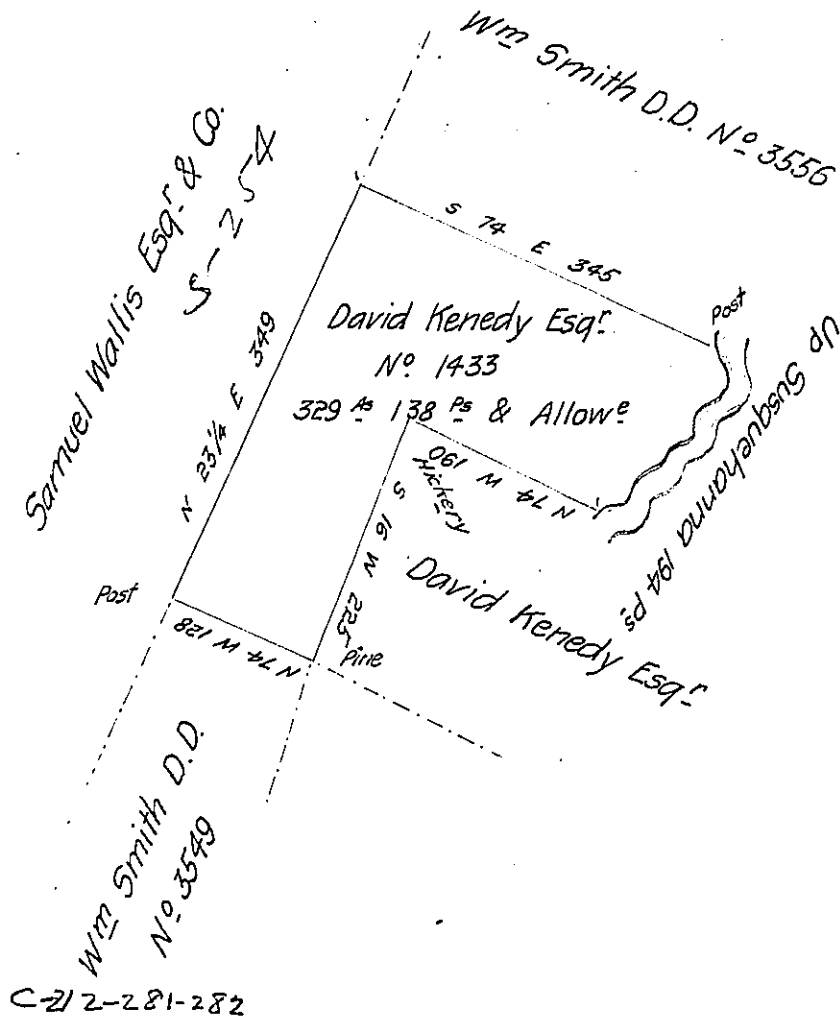


The Courses Up the River
from the post to the W.O.

- S 23 E 40
- S 72 W 26
- S 20 W 35
- S 48 W 15
- S 31 W 14
- S 51 W 17
- S 8 W 22
- N 70 W 17
- S 67 W 8 W.O.
- 194 Perches



Situate on the West Branch of Sisquahanna—above the Chest falls in the
County of Northumberland District N^o 5661 containing Three Hundred & Twenty Nine Acres
& One Hundred & Thirty eight Perches & the Usual Allowance of Six P^r. C^t for Roads
&c. Surveyed the Nineteenth day of June 1793 In pursuance of a Warrant to David
Kenedy Esq. N^o 1433 dated the seventeenth day of May 1792 for 300 A^s

Pr.

James Hunter D.S.

To Daniel Bradhead Esq. S. G.

IN TESTIMONY that the above is a copy of the original remaining on file in
the Department of Internal Affairs of Pennsylvania, made
conformably to an Act of Assembly approved the 16th day of
February, 1833, I have hereunto set my Hand and caused
the Seal of said Department to be affixed at Harrisburg,
this twenty sixth day of June 1905

Isaac D. Brown
Secretary of Internal Affairs.